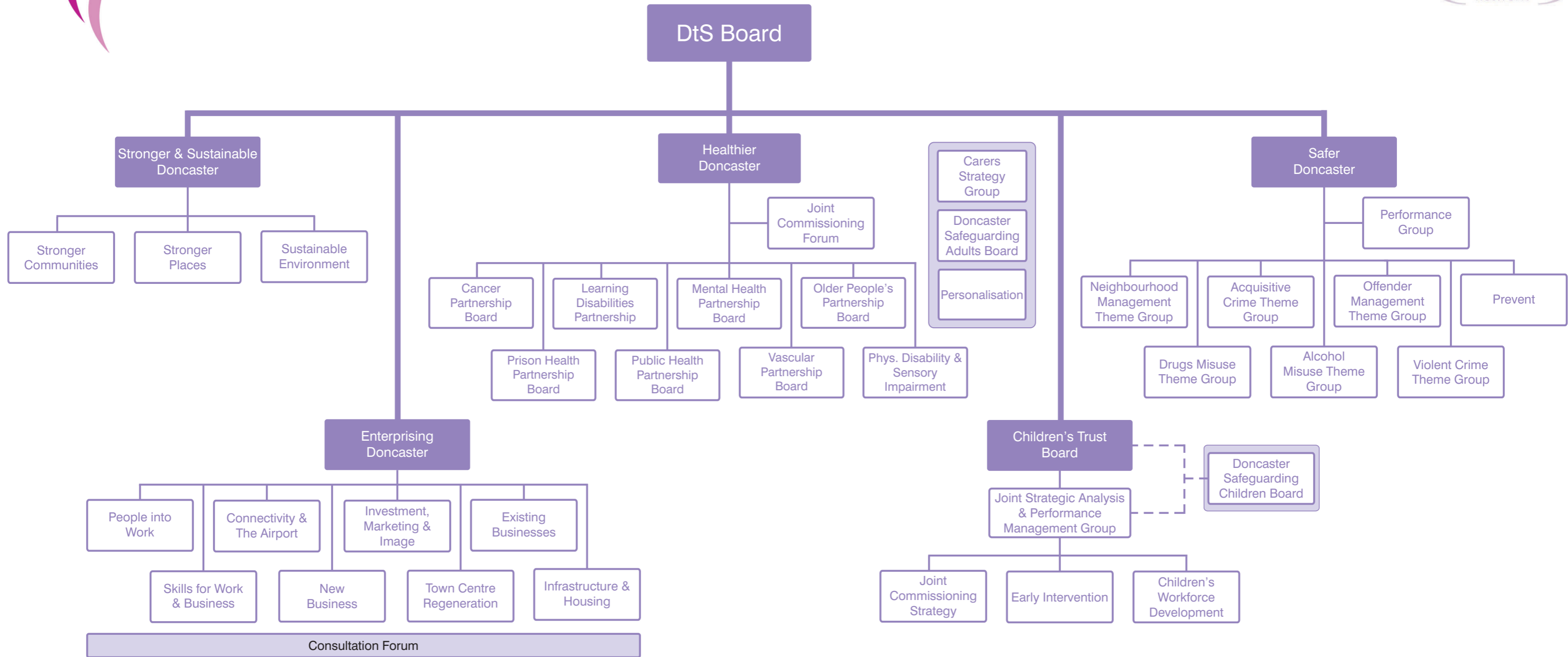




# The Discover the Spirit Partnership



## Safer Doncaster

- NI 016 Serious acquisitive crime
- NI 018 Adult re-offending rate
- NI 019 Youth re-offending rate
- NI 020 Assault with injury crime rate
- NI 021 Dealing with concerns about ASB & crime by Council & Police
- NI 032 Repeat domestic violence
- NI 033 Arson incidents
- NI 037 Awareness of civil protection
- NI 038 Drug related offending rate
- NI 047 People KSI in road traffic accidents
- Local Alcohol reduction

## Stronger & Sustainable Doncaster

- NI 004 Influencing local decisions
- NI 005 Overall satisfaction with Doncaster
- NI 007 Environment for thriving third sector
- NI 011 Engagement in the arts
- NI 140 Fair treatment by local services
- NI 186 Per capita CO2 emissions
- NI 188 Adapting to climate change
- NI 189 Flood risk management
- NI 192 Household waste recycled
- NI 195 Improved street cleanliness
- NI 197 Improved local biodiversity

## Healthier Doncaster

- NI 008 Adult participation in sport
- NI 120 All age/cause mortality rate (male/female)
- NI 122 Under 75 cancer mortality rate
- NI 123 16+ smoking rate quitters
- NI 128 Respect & dignity in treatment
- NI 130 Clients receiving self-directed support
- NI 132 Timeliness of social care assessment
- NI 135 Carers receiving needs assessment or review and service/advice/information
- NI 142 Vulnerable people supported to maintain independent living

## Enterprising Doncaster

- NI 151 Overall employment rate
- NI 152 Working age out of work benefits
- NI 153 Working age out of work benefits in deprived areas
- NI 154 Net additional homes
- NI 158 % non-decent council homes
- NI 163 Working age - Level 2 or higher
- NI 164 Working age - Level 3 or higher
- NI 171 New business registration rate
- NI 167 Congestion - average journey time
- NI 187 Tackling fuel poverty
- NI 195 Improved street cleanliness
- NI 197 Improved local biodiversity
- Local New jobs Success Doncaster
- Local Business starts Success Doncaster
- Local VAT registrations Success Doncaster
- Local Total Entrepreneurial Rating

## Doncaster Children's Trust

- NI 056 Year 6 obesity
- NI 063 Looked after children - placement length
- NI 110 Participation in positive activities
- NI 112 Under 18 conception rate
- NI 114 Permanent exclusion rate
- NI 115 Substance misuse by young people
- NI 116 Proportion of children in poverty
- NI 117 16-18 year old NEET
- Local Core children social care assessments within 35 days
- Local 5+ A\*-C GCSE or equivalent including English & Maths (Floor)
- Local Level 2 qualification by age 19
- Plus 16 statutory DCSF Targets: NI 072, NI 073, NI 074, NI 075, NI 083, NI 087, NI 092, NI 093, NI 094, NI 095, NI 096, NI 097, NI 098, NI 099, NI 100, NI 101**